



TECHNICAL BOOKLET

---

# Doors coating

AIR TECHNOLOGY

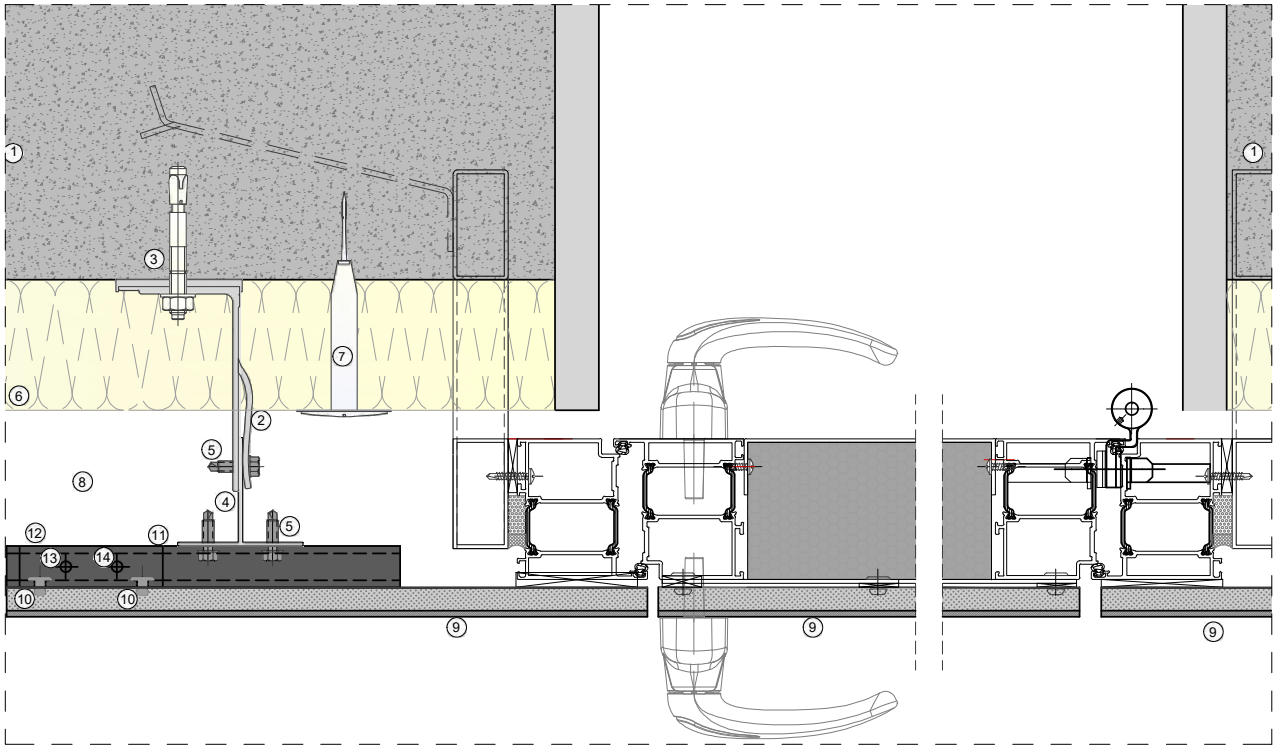
## Doors coating

---

*The GammaStone panels are perfectly suitable to clad interior or exterior doors*

This solution allows continuity between the façade and the doors, providing an incomparable aesthetic effect. The lightness of our panel allows the doors to be installed with ease, even if in a large format. Using the specific framing engineered by GammaStone, the door can be installed in line with the façade and the hinges can be invisible from the outside.





## Door

- 1) Structural wall
- 2) Bracket
- 3) Anchor
- 4) Mullion
- 5) Self dril. Screw
- 6) Insulation
- 7) Insul. Fixing
- 8) Ventilation
- 9) GammaStone AIR Panel
- 10) Rivet
- 11) GammaStone rail \*
- 12) GammaStone clip \*
- 13) Fixing Screw
- 14) Adjust. Screw

\* in black anodized aluminum



**GammaStone headquarters**

Via Flaminia 148  
00068 Rignano Flaminio (Roma) Italy

**Production Plant 2**

Loc. Quartaccio - strada provinciale 74 - km 1,45  
01034 Fabrica di Roma (VT) Italy

**Tel.: +39 0761 5051 Fax: +39 0761 508388**

**info@gammastone.com**

---

## Milan office

Tel.: +39 02 39198813  
milano@gammastone.com

## USA office

Ph. +1 866 US GAMMA (87 42662)  
info.na@gammastone.com

## UK office

Ph. +44 203 9667769  
uk@gammastone.com

## Spain office

Ph. +34 93 2712434  
spain@gammastone.com

[gammastone.com](http://gammastone.com)